

# ROUGE VALLEY

*news you can use*

## CE LHIN FOUNDING DIRECTORS OF THE BOARD



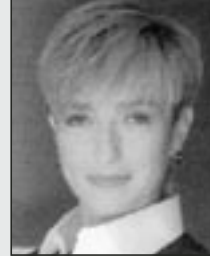
Foster D. Loucks



Joseline Sikorski



Jean Achmatowicz  
Macleod



Marilyn Emery

## LHIN model transforming Ontario healthcare

The provincial government, through the Ministry of Health and Long Term Care, has set a goal of transforming healthcare to ensure that the system is more patient-centred and responsive to local needs. In October 2004 it began working with the province's healthcare providers to develop a new model by introducing the concept of Local Health Integration Networks or LHINs. To date, the province has divided the province up into 14 of these LHINs, grouping together all types of healthcare services, providers and hospitals, to better plan, co-ordinate, integrate and fund the delivery of healthcare services at the local level.

Rouge Valley Health System is part of the Central East LHIN and has already started meeting with other Central East LHIN partners to discuss priorities and

*Rouge Valley Health System is part of the Central East LHIN and has already started meeting with partners to discuss priorities and goals for the new structure.*

goals for the new structure. In June, the provincial government announced the appointments of the LHINs Chairs and founding board directors. The Chairs then announced the appointments of the CEOs for each LHIN.

In the Central East LHIN, the Chair and founding board directors are Foster Louks (chair) and Jean

Achmatowicz MacLeod and Joseline Sikorski. The CEO is Marilyn Emery. The Central East LHIN headquarters will be located in Ajax.

According to the provincial government, the roles of LHINs will be phased in over time. Subject to the passage of legislation, they would begin by working with the local community and health care providers to set priorities and plan health services in their area. They would then move to integrating and co-ordinating local health services, and eventually, to determining and providing funding and resources.

For more information on the provincial government's "Transforming Healthcare" approach, please visit their website at [http://www.health.gov.on.ca/transformation/lhin/lhin\\_mn.html](http://www.health.gov.on.ca/transformation/lhin/lhin_mn.html)



**Rouge Valley**  
HEALTH SYSTEM

# CE LHIN: Health Providers, Programs & Services

## ADDICTIONS

Chinese Family Services of Ontario . . . . .	Scarborough
Four Counties Addiction Services Team Inc. . . . .	Peterborough
Fourcast Addiction Services. . . . .	Peterborough
Pinewood Centre . . . . .	Oshawa
Salvation Army Harbour Light . . . . .	Central Toronto

## CHILDREN'S TREATMENT CENTRES

Grandview Children's Centre . . . . .	Oshawa
Five Counties Children's Centre . . . . .	Peterborough

## COMMUNITY CARE ACCESS CENTRES

CCAC Durham . . . . .	Whitby
CCAC Haliburton, Northumberland & Victoria. . . . .	Lindsay
CCAC Peterborough . . . . .	Peterborough
CCAC Scarborough . . . . .	Scarborough

## COMMUNITY HEALTH CENTRES

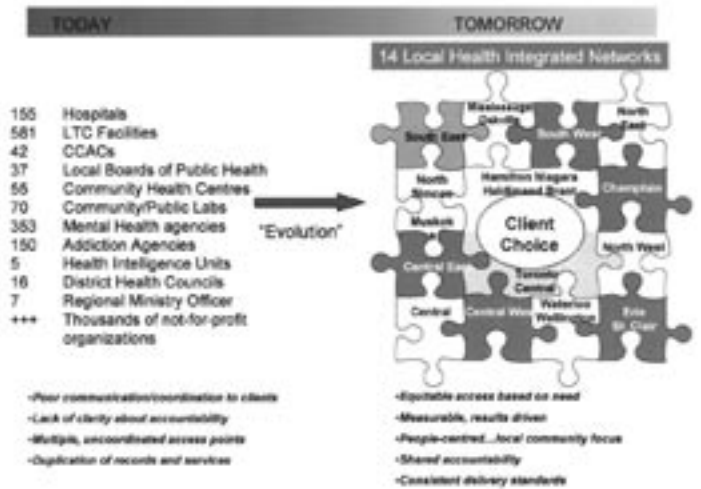
Oshawa Community Development Project . . . . .	Oshawa
The Youth Centre . . . . .	Ajax
West Hill Community Health Centre . . . . .	Toronto

## HOSPITALS

Bellwood Health Services Inc., Scarborough . . . . .	Toronto
Campbellford Memorial Hospital . . . . .	Campbellford
Haliburton Highlands Health Services Corporation. . . . .	Haliburton
Haliburton Highlands Health Services Corporation. . . . .	Minden
Lakeridge Health Corporation . . . . .	Clarington
Lakeridge Health Corporation . . . . .	Oshawa
Lakeridge Health Corporation . . . . .	Port Perry
Lakeridge Health Corporation . . . . .	Whitby
Markham-Stouffville Hospital. . . . .	Uxbridge
Northumberland Hills Hospital . . . . .	Cobourg
Peterborough Regional Health Centre. . . . .	Peterborough
Ross Memorial Hospital. . . . .	Lindsay
Rouge Valley Health System. . . . .	Ajax
Rouge Valley Health System. . . . .	Toronto
Scarborough Salvation Army Grace General Hospital . . . . .	Toronto
Whitby Psychiatric Hospital . . . . .	Whitby

## LONG-TERM CARE FACILITIES

Altamont Nursing Home . . . . .	Scarborough
Anson House . . . . .	Peterborough
Ballycliffe Lodge Nursing Home. . . . .	Ajax
Bay Ridges Long-Term Care Centre . . . . .	Durham
Bendale Acres. . . . .	Scarborough
Bon-Air Nursing Home . . . . .	Cannington
Burnbrae Gardens Long-Term Care Residence . . . . .	Campbellford
Campbellford Memorial Hospital . . . . .	Campbellford
Caressant Care Lindsay Nursing Home . . . . .	Lindsay
Caressant Care McLaughlin Road . . . . .	Kawartha Lakes
Case Manor Nursing Home . . . . .	Bobcaygeon
Centennial Place Long-Term Care Centre . . . . .	Peterborough
Community Nursing Home . . . . .	Port Perry



Community Nursing Home . . . . .	Port Hope
Community Nursing Home . . . . .	Pickering
Community Nursing Home . . . . .	Warkworth
Craiglee Nursing Home . . . . .	Scarborough
Ehatare Nursing Home . . . . .	Scarborough
Extendicare, Cobourg. . . . .	Cobourg
Extendicare, Kawartha Lakes . . . . .	Lindsay
Extendicare, Lakefield . . . . .	Lakefield
Extendicare, Rouge Valley. . . . .	Toronto
Extendicare, Guildwood . . . . .	Scarborough
Extendicare, Haliburton . . . . .	Haliburton
Extendicare, Oshawa . . . . .	Oshawa
Extendicare, Peterborough . . . . .	Peterborough
Extendicare, Scarborough. . . . .	Scarborough
Fairhaven Home for the Aged . . . . .	Peterborough
Fairview Lodge . . . . .	Whitby
Fenelon Court Long-Term Care Centre . . . . .	Fenelon Falls
Fosterbrooke Long-Term Care Facility. . . . .	Newcastle
Frost Manor. . . . .	Lindsay
Golden Plough Lodge . . . . .	Cobourg
Highland Wood. . . . .	Haliburton
Hillsdale Manor. . . . .	Oshawa
Hyland Crest Senior Citizen's Home . . . . .	Minden
Kennedy Lodge Nursing Home . . . . .	Scarborough
Lakeview Manor . . . . .	Beaverton
Leisureworld Caregiving Centre, Ellesmere . . . . .	Scarborough
Leisureworld Caregiving Centre, Scarborough . . . . .	Scarborough
Maplewood . . . . .	Brighton
Marnwood Lifecare Centre . . . . .	Bowmanville
Marycrest Home for the Aged. . . . .	Peterborough
Metro Toronto Legion Village . . . . .	West Hill
Peterborough Regional Health Centre. . . . .	Peterborough
Pincrest Nursing Home . . . . .	Bobcaygeon
Pleasant Meadow Manor . . . . .	Norwood
Regency Manor Nursing Home . . . . .	Port Hope
Riverview Manor Nursing Home . . . . .	Peterborough

Continued on back page

# CE LHIN: Municipalities and communities

The Central East LHIN boundaries include all of Durham Region, Kawartha Lakes, the Haliburton Highlands, Northumberland County, and Peterborough County. Central East also contains part of the eastern City of Toronto (east of Warden, south of Steeles).

Ajax  
Alderville  
Apsley  
Argyle  
Ashburn  
Assumption  
Baddow  
Bailieboro  
Baltimore  
Beaverton  
Bethany  
Bewdley  
Big Cedar  
Birch Point  
Blackstock  
Blackwater  
Blairton  
Bobcaygeon  
Bolsover  
Bowmanville  
Bridgenorth  
Brighton  
Brooklin  
Brougham  
Buckhorn  
Burketon  
Burleigh Falls  
Burnt River  
Caesarea  
Camborne  
Cambray  
Cameron  
Campbellcroft  
Campbellford  
Cannington  
Cardiff  
Carnarvon  
Castleton  
Catchacoma  
Cavan  
Centreton  
Cherrywood  
Claremont  
Coboconk  
Cobourg  
Codrington  
Colborne  
Cold Springs  
Columbus  
Coppin's Corners  
Cordova Mines

Courtice  
Creighton Heights  
Crose's Landing  
Curve Lake  
Dalrymple  
Donwood  
Douro  
Downeyville  
Dunsford  
Eagle Lake  
Elizabethville  
Enniskillen  
Ennismore  
Fenella  
Fenelon Falls  
Fort Irwin  
Fowler's Corners  
Fraserville  
Furnace Falls  
Garden Hill  
Gelert  
Gilchrist Bay  
Glen Alda  
Glenarm  
Gooderham  
Goodwood  
Gores Landing  
Grafton  
Greenbank  
Greenhurst-  
Thurstonia  
Greenwood  
Guilford  
Haliburton  
Hall Glen  
Halls Lake  
Hampton  
Harcourt  
Harwood  
Hastings  
Havelock  
Haydon  
Highland Grove  
Hilton  
Hoards  
Ida  
Ingoldsby  
Irondale  
Ironsides  
Janetville  
Kawartha Park

Keene  
Kendal  
Kennisis Lake  
Kinmount  
Kinsale  
Kirby  
Kirkfield  
Lake Dalrymple  
Lakefield  
Lakehurst  
Leaskdale  
Lindsay  
Little Britain  
Little Hawk Lake  
Lochlin  
Long Beach  
Lorneville  
Manchester  
Manilla

Mathers Corners  
McCracken's  
Landing  
Millbrook  
Milliken West  
Minden  
Miners Bay  
Mitchell's Corners  
Moore Falls  
Morganston  
Mount Julian  
Mount Pleasant  
Murray Hill  
Myrtle  
Myrtle Station

Nephton  
Nestleton  
Nestleton Station  
Newcastle  
Newtonville  
Nogie's Creek  
Norham  
Norland  
Norwood  
Oak Orchard  
Oakwood  
Omemee  
Orono  
Oshawa  
Oxtongue Lake  
Petherick's Corners  
Pickering  
Pickering Village  
Pleasant Point  
Pontypool

Port Darlington  
Port Hope  
Port Perry  
Precious Corners  
Prince Albert  
Raglan  
Reaboro  
Rosedale  
Roseneath  
Saintfield  
Salem  
Sandford  
Scarborough  
Seagrave  
Selwyn  
Solina  
Sonya  
South Beach  
South Monaghan  
Springville  
Stewart Hall  
Stonyridge  
Sturgeon Point  
Sunderland  
Taunton  
Taylor Corners  
Tory Hill  
Trent River  
Tyrone  
Uphill  
Utica  
Uxbridge  
Valentia  
Vernonville  
Victoria Road  
Villiers  
Warkworth  
Warsaw  
Welcome  
Westwood  
Whitby  
Whitchurch-  
Stouffville  
Whitevale  
Wicklow  
Wilberforce  
Woodview  
Woodville  
Young's Point  
Zephyr



Continued from page 2

**LONG-TERM CARE FACILITIES**

Rockcliffe Nursing Home . . . . .	Scarborough
Ross Memorial Hospital . . . . .	Lindsay
Seven Oaks . . . . .	Scarborough
Shepherd Lodge . . . . .	Agincourt
Shepherd Terrace . . . . .	Agincourt
Springdale Country Manor . . . . .	Peterborough
St. Joseph's at Fleming . . . . .	Peterborough
Strathaven Lifecare Centre . . . . .	Bowmanville
Streamway Villa . . . . .	Cobourg
Sunnycrest Nursing Home . . . . .	Whitby
Tendercare Living Centre . . . . .	Scarborough
The Wexford . . . . .	Scarborough
Thornton View . . . . .	Oshawa
Trilogy Long-Term Care . . . . .	Scarborough
Versa-Care Centre . . . . .	Uxbridge
Victoria Manor Home for the Aged . . . . .	Lindsay
Village Of Taunton Mills (The) . . . . .	Durham
Winbourne Park . . . . .	Ajax
Wynfield (The) . . . . .	Durham
Yee Hong Centre, Scarborough Finch . . . . .	Scarborough
Yee Hong Centre for Geriatric Care . . . . .	Scarborough

**MENTAL HEALTH**

C.O.P.E. Mental Health Program (Community Care Durham) . . . . .	Oshawa
Campbellford & District Community Mental Health Centre . . . . .	Campellford

Canadian Mental Health Association . . . . .	Peterborough
Children's Mental Health Program . . . . .	Oshawa
Children's Mental Health Program . . . . .	Peterborough
City of Kawartha Lakes Community Support Program . . . . .	City of Kawartha Lakes
Canadian Mental Health Association, Durham Clubhouse Branch . . . . .	Oshawa
Colborne Community Services . . . . .	Whitby
Community Counselling Services . . . . .	City of Kawartha Lakes
Community Progress (Rouge Valley) . . . . .	Scarborough
Alzheimer Society of Durham Region . . . . .	Oshawa
Haliburton Highlands Mental Health Services . . . . .	Minden
Hong Fook Mental Health Services . . . . .	Toronto
Interact, Community Mental Health Program . . . . .	Oshawa
Northumberland Hills Hospital . . . . .	Cobourg
Psychiatric Assessment & Schizophrenia Clinic . . . . .	Peterborough
Salvation Army Community Support & Employment Program . . . . .	Toronto
Scarborough Hospital Child and Adolescent Program . . . . .	Toronto
Scarborough Hospital Canadian Mental Health Program . . . . .	Scarborough

**SEXUAL ASSAULT / EATING DISORDER**

Outreach Counselling Program . . . . .	Peterborough
Shoniker Clinic . . . . .	Scarborough
Survivors Psychiatric Advocacy Network (S.P.A.N.) . . . . .	Lindsay
United Survivors Support Centre . . . . .	Oshawa
Victorian Order of Nurses - Durham Region Branch . . . . .	Oshawa
Whitby Mental Health Centre . . . . .	Whitby



**Rouge Valley Centenary**

2867 Ellesmere Rd, Scarborough, ON M1E 4B9 (416) 284-8131



**Rouge Valley Ajax and Pickering**

580 Harwood Avenue South, Ajax, ON L1S 2J4 (905) 683-2320

*Rouge Valley Health System operates six sites, including Rouge Valley Centenary hospital and Rouge Valley Ajax and Pickering hospital, the Shoniker Health Clinic, Community Progress and two community mental health housing programs.*

