

Rouge Valley Ajax-Pickering Emergency Department

February 16, 2010
Ajax Seniors Friendship Club

Cheryl Williams RN PhD Director Emergency and Mental
Health Services
Arden Eldridge RN BScN Manager Emergency Services
Dianna Harrison RN BScN ENC (C) CPL Emergency
Services



The best at what we do

1

Proudly Growing with Our Community

- We have grown with our community over the past 56 years
- We started out with 38 beds in 1954 and with the support of our community have grown to over 144 beds



The best at what we do

Our Roots, Opened In 1954



The best at what we do

As Our Community Grows, So Do We! Ajax-Pickering Hospital 1964



The best at what we do

The West Tower addition in 1994



The best at what we do

Rouge Valley Ajax-Pickering 2010



The best at what we do

Official Opening



The best at what we do

Your Emergency Department

- Designed for 20,000 visits we now see over 47,000 people through our department every year



The best at what we do

8

Your ED Management Team



The best at what we do



When You Arrive

Triage Nurse

- Does an infection control screen
 - You may be asked to don a mask
- Categorizes and prioritizes your visit according to emergency guidelines
- Will ask for your Medical Fact Sheet



The best at what we do



Medication Lists

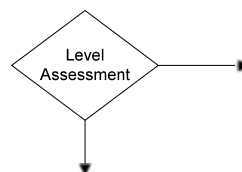
When you come to the Emergency Department as a patient, please bring your medication list or medicine bottles



The best at what we do



Then...



An assessment is made by an experienced Registered Nurse based on the seriousness of your condition, which is then categorized into 5 levels (Resuscitation, emergent, urgent, less urgent, and non-urgent)

You'll be assigned to different areas; waiting room or treatment area



The best at what we do




Next Steps



Registration Clerk
Will request your health card and personal contact information to create your profile for your current emergency visit






The best at what we do



You may receive.....

Accelerated Care

- By an experienced Registered Nurse
- Perform diagnostic testing in preparation for doctor evaluation
- Example: blood work, ECG, X-rays

The best at what we do

Where do I go next?



The best at what we do

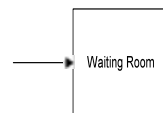
This is our brand new trauma Room



The best at what we do



Where do I go next?



Waiting Room

- Investigations may be initiated
- First aid may be provided
- If Changes in your condition, contact the triage nurse immediately
- Do not eat or drink



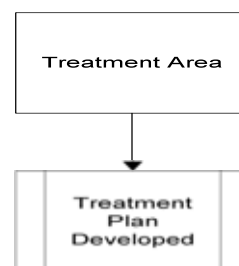
The best at what we do



Where do I go next?

Treatment Area

- Assess by Nursing Staff
- Examination by ER Physician
- Treatment plan developed
 - Which involves the Emergency Team



The best at what we do

The Emergency Team

- Physicians
- Registered Nurses
- GEM nurse
- Registered Practical Nurses
- Physiotherapist
- Clerical
- Personal Support Representative (PSR)
- Social worker
- Crisis Worker
- Volunteers
- Home care representative
 - CCAC
 - DATC



The best at what we do

Some members of Our Team!

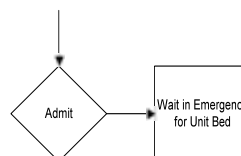


The best at what we do



If you are admitted.....

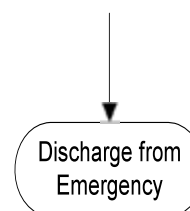
- You'll be transferred to the ward as soon as a bed is available
- You may remain in ER while a bed is being found for you
- ER staff and physician will care for you until your bed is ready



The best at what we do

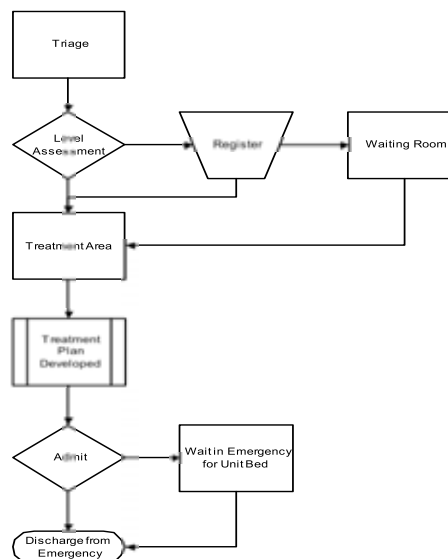
When you leave...

- 1) Follow your MD/Primary Nurse's instructions regarding discharge, treatment and follow up
- 2) Please call your family physician/specialist for follow-up visit whenever necessary
- 3) Parking



The best at what we do

• Our
• Emergency
• Department
• Flow



The best at what we do

Frequently Asked Questions

- ? How long will I wait
- ? Can I eat/drink
- ? Why can't I eat/drink
- ? Can I use my cell phone
- ? Should I take my pills
- ? Can my family visit
- ? Is there a phone I can use



The best at what we do

Frequently Asked Questions

- ? Is there a wheelchair
- ? Is my family doctor to get my results
- ? Disclosure to family
- ? What are mandatory disclosure
- ? What do I bring the Emergency Department
- ? Should I have called an Ambulance



The best at what we do

When to come to the Emergency Department

- Chest pain
 - Sudden onset of weakness/dizziness or loss of consciousness
 - Sudden changes in speech or vision
 - Head injury
 - Breathing difficulties
 - Broken bones
 - Major sprains
 - Large cuts/wounds
- Severe abdominal pain
 - Heavy bleeding
 - Persistent vomiting/diarrhea
 - High fever



The best at what we do

Our Multidisciplinary Team is Here for You!



The best at what we do

Questions?



The best at what we do