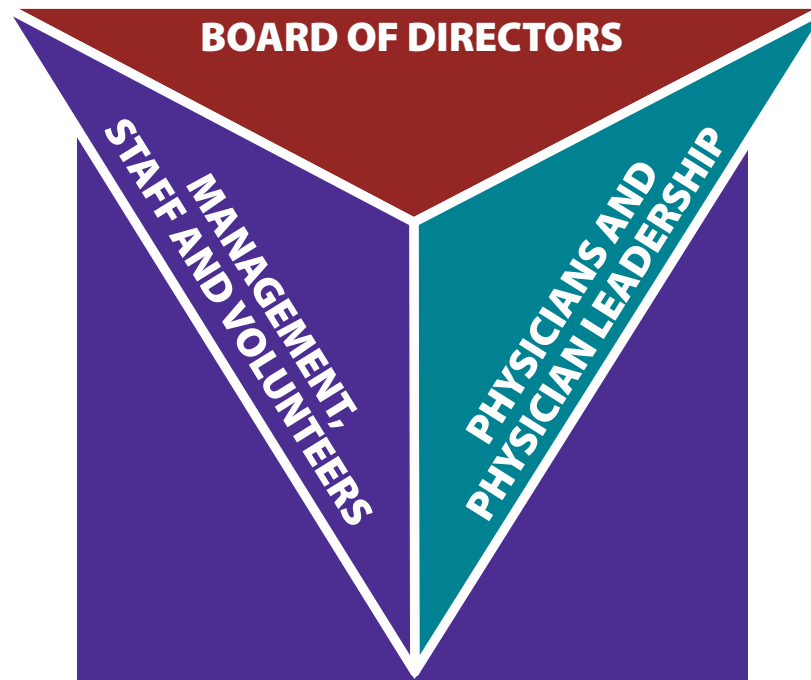


Rouge Valley Health System Strategic Plan-on-a-page

Achieving our Mission, Vision and Values



Mission

To provide the best healthcare experience for our patients and their families.

Vision

To be the best at what we do.

Values

- **Accountable** for our resources, our services and our behaviours.
- **Responsive, respectful and caring** to our patients, colleagues and community.
- **Value the diversity** of our organization and community.
- **Honest and trustworthy.**
- **Strive for innovation and high performance** and committed to continuous learning.

www.rougevalley.ca

Strategic Plan

To be the *best at what we do*, we will:

- Work as a Team (Board of Directors, Senior Management, Physician Leaders) with all staff, physicians and volunteers.
- Live our values every day, all day.
- Relentlessly focus on Quality Care, Patient and Staff Safety delivered in a Healthy Workplace.
- Develop and execute plans to maintain and strengthen our Core Services, maintain and enhance our existing Centres of Excellence and develop new Centres of Excellence.
- Plan and deliver our services within the context of the Central East Local Health Integration Network's (CE LHIN) Integrated Health Services Plan (IHSP) and Clinical Services Plan (CSP).
- Deliver our services within the fiscal resources available to us.

Core Services

24/7/365 emergency departments supported by:

- 24-hour anaesthetic coverage;
- High dependency units (such as ICU);
- General surgery capacity, including day surgery;
- Community-level obstetrical and paediatric services;
- General medical and geriatric services;
- Some rehabilitation and mental health services; and
- Centres for diagnostics, treatment and ambulatory care.

Core Services will be delivered at both of our acute care campuses at Rouge Valley Centenary and Rouge Valley Ajax and Pickering.

Our initial focus will be to strengthen delivery and capacity of Core Services.

Centres of Excellence

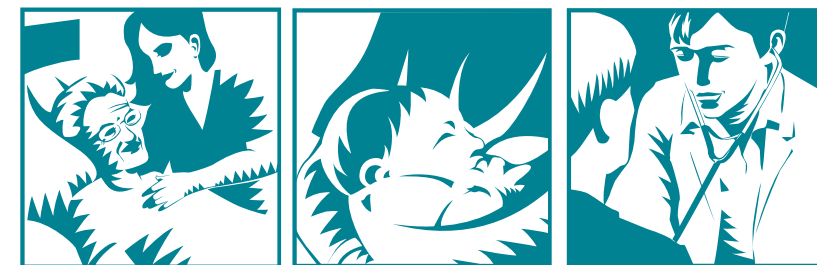
RVHS has two Established Centres of Excellence that fulfill a regional role within the CE LHIN network of care. These are **Cardiac Care** and **Mental Health**. We will continue to manage these centres and develop them based on the identified role and needs within the CE LHIN.

In addition to our Established Centres of Excellence, RVHS has potential Centres of Excellence that it may choose to develop. Development of new Centres of Excellence will not adversely impact the delivery and strengthening of our Core Services.

- Potential (Evolving) Centres of Excellence include:
 - Minimally Invasive Surgery;
 - Obstetrics;
 - Orthopaedics; and
 - Paediatrics and Neonatology.
- We will limit the number of our Centres of Excellence based on leadership's view of how much we can successfully achieve.
- New Centres of Excellence will be developed, evaluated and selected based on a collaborative process.
- After Core Services, Established Centres of Excellence will receive priority in the allocation of corporate resources.
- New Centres of Excellence will receive investment to the extent that funds are available and the investment is clearly supported by a comprehensive business plan that demonstrates community focus, linkage to the CE LHIN strategy and its CSP, as well as fiscal sustainability.
- Centres of Excellence will be organized to maximize the efficacy, quality and affordability of service delivery within the context of the CE LHIN Clinical Services Plan.
- Centres of Excellence may be located at only one campus to ensure that clinical efficiency and efficacy are maximized.



Rouge Valley
HEALTH SYSTEM



The best at what we do.